


2021년
기술평가우수인증기업

 NICE 평가정보(주)



International Distribution Standard
RFID-based ERP Suite

Solution used in famous fashion companies

Business area

Business area

1

Doosoun CNI provides the optimization of resource management, the cooperation between the inside and outside of the organization, organization competency strengthening, information sharing, work flow improvement and the optimal method for supporting the activation of the management efficiency by providing the consulting and fashion ERP solution service.

2

Doosoun CNI promotes various new business related to ERP, mobile services , RFID, etc. and suggest the solution facilitating the creation of a single big synergy.

3

Doosoun CNI is an IT development group considering the creativity and passion the highest value. We plan and develop necessary optimal solutions based on years of experience and know-how.



- Corporate name Doosoun CNI Corp. (www.doosoun-cni.com)
- Date of establishment November 15th, 2007
- President Hyeonmo, Kwon
- Head office location Ilshim Bldg. 41 61, Seongsui-ro 22-gil, Seongdong-gu, Seoul, Republic of Korea
- A major business
 - Fashion IT consulting and operation consulting
 - Fashion ERP service, equipment distribution, establishment of
 - RFID integrated solution
 - System integration and service, mobile solution development / sales

History

Development and History of Doosoun ERP

2020

RFID
system



- 2022 · Launch of BootSoft.Pro ASEAN Service
(WMS/E-commerce Back Office - English, Korean, Vietnamese)
collaborative service

- Cafe24 VN, Cafe24 KR, Cafe24 TW, Wisa Global

- 2021 · WMS open source development
- ERP ver. 10.0 launching with Doosoun
- Laundry management methods and servers using RFID
(Patent No. 10-2201382)
- .NET Common Framework CoWare Launch

BOOT
WMS

- 2020 · Selection of certified companies with excellent technical evaluation
(NICE evaluation information)
- Duso CADOO launch (Cafe24-based pre-sale mall)
- Duplexon ERP ver.10 launching
- Duso ETS ver.9.0 Launch



2010



Widoo

- 2019 · Establishment of R&D Center in Vietnam
- Establishment of China R&D Center
- 2018 · Built RFID-based big data
- Strengthened globalization / localization service
- Built sensor-based customer flow information
- 2017 · Launched mPOS (mobile sales)
- Launched Contents Management System
- Based on Inventory Control Tower Secure technology
- 2015 · Launched Widoo service
- Integrated on./offline customer
- Linked with Wisa, Cafe24 and Makeup Sabangnet
- 2012 · Launched Doosoun ERP ver.8.0 (Multi-language/Integration of on-offline)
- 2011 · Launched Mobile Business, Launched the EIS System
- 2010 · Launched Doosoun ERP ver.7.0 · Certified as venture

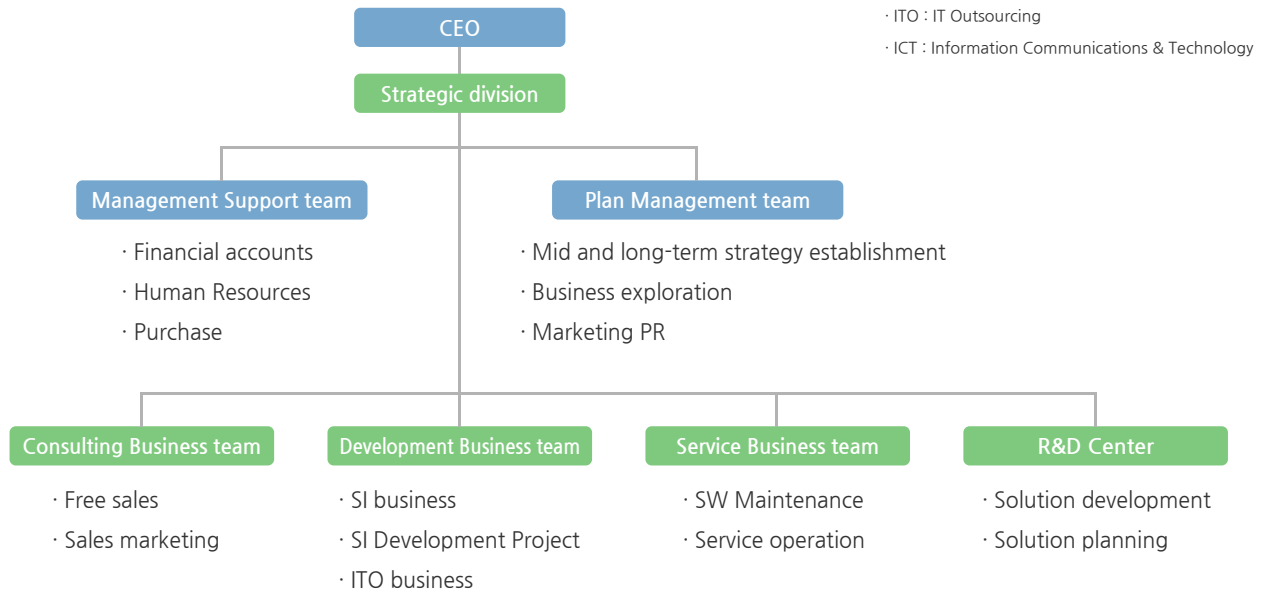
2000

ERP

- 2009 · Established R&D center and launched POS system
- 2008 · Launched BI System
- 2007 · Launched Doosoun ERP ver.6.0 (multi-language version)
- Founded branch of Doosoun C&I(Nov.)
- 2006 · Launched Doosoun ERP ver.5.0
- 2005 · Launched Doosoun ERP ver.4.0
- 2004 · Launched Doosoun ERP ver.3.0
- 2001 · Launched Doosoun ERP ver.2.0

Organization


- Reliable people - They have led current Doosoun C&I.





Corporate Identity

- The symbol mark formed as a well-organized puzzle with d and s in a big square frame means the reasonable company dreaming the well-organized organization system.
- The green and blue color means the passionate young company of youth and challenge and the yellow and gray square means the company becoming one with the customer.
(Elements forming the square = d,s = company, 3 squares = customer)
- Means equipping the safe and well-organized system and the best operation system connecting the customer and Doosoun C&I managing and operating overall work system of the customer like a snail which is hermaphrodite (sexless) through Doosoun C&I.



 C : 55 M : 15 Y : 0 K : 0

 C : 50 M : 0 Y : 50 K : 0

 C : 0 M : 10 Y : 60 K : 0

 C : 0 M : 0 Y : 0 K : 50

 C : 0 M : 0 Y : 0 K : 80

Main product

Staple products and services

· ICT : Information Communications & Technology

· Doosoun CNI provides the customer with the systematic from consulting to the system establishment and operation through the perfect combination of three areas.

In addition, we, as the reliable partner, will provide the best value to the customer by providing the competent product and fast and optimal solution by accepting the customer's requirement as much as possible.



The direct experience and know-how obtained by providing the consulting service in the fashion/distribution fields for 10 years play the major role in solving issues of customers.



Provide a business solution helping the company Maximize the efficiency and conduct fast and Intelligent business.



Provide the complicated ICT integrated service Including system integration, outsourcing, ERP/BI, S/W development, H/W and network equipment distribution and maintenance.

Doosoun ERP 10™

S/W solution optimized for operation of Small and mid fashion & distribution company

Doosoun ERP helps the effective management of all the Important information required by the customer from sales and customer relation to the accounting, production, Purchase and material.

This solution especially specified for the small and mid fashion and distribution company manages the process efficiently and support decision making based on The information on time.

Provide business process optimized for Fashion and distribution business

Various experience & building know-how

- About 160 customers in Korea
- Establishment of consulting=based solution
- Multi-language support

1

Work-oriented System specification

- 2-tier client-server structure
- Oracle Database
- Applying quantum greed
- Applying RIA component (Mobile)

2

Strength of Solution

Integrated flexibility

- Smooth connection with MS Office
- Link to Cafe24, shopping mall such as makeup
- Link to external accounting management module like Duzon
- Link to groupware electronic payment system

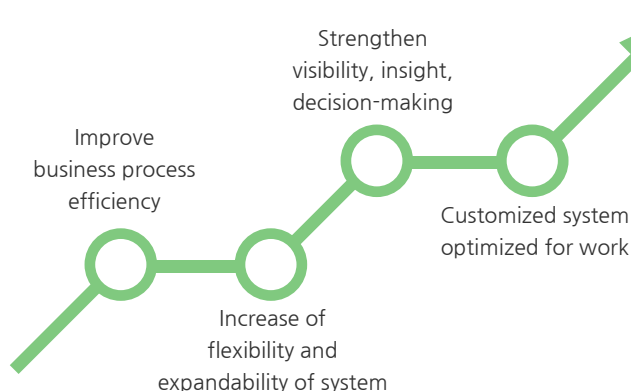
3

Excellent maintenance

- Systematic call center support
- Continuous product development & application
- Programming for rapid maintenance

4

Increase of work producibility & Improvement of maintenance efficiency



Doosoun ERP 10™

· BI : Business Intelligence · EIS : Executive Information System

Solution Map

We provide the solution map to help understanding how the functional modules formed according to the rapidly expanding and exchanging fashion business circumstance are organically coupled.

Solution Map	
BI & Other	Mobile-based E.I.S (FLEX Dashboard) , Inventory Control Tower (product operation recommendation service)
Doosoun ERP Core Function	Common management Right · code · board · DB analysis, etc.
	Planning and management Product plan · product information · work direction, purchase direction, accented product management promotion, order, analysis, etc.
	Distribution management Incoming, outgoing, transfer between warehouses, promotion supplies management, repair, etc.
	Material management Basic information, order, incoming, outgoing, inventory, calculation management, pre-estimated/ post cost, etc
	Production management Consumption · production · claim · monthly deadline · payment · calculation management, etc.
	Sales management Base · incoming · distribution · horizontal migration · sales (analysis) · sales · collection · inventory · repair · deadline
	Customer management(CRM) Member · campaign · mileage · deposit · trend analysis · purchase analysis · on/offline integration, etc.
	Market management(POS) Base · sales · incoming · inventory · customer· coupon · accumulation · text message service · mobile sales/card approval
	SCM Delivery plan, box barcode, bundle, loading, unloading, automated import process, export process
	Widoo Our company's master link, Sabangnet link, order, delivery, inventory, customer, accumulation, deposit, coupon, etc.
	ETS9 call center system linked to Doosoun ERP10
	Link to accounting Link to accounting system (Duzon CUBE, IU, SAP, etc.)
	Groupware DAOU Office interworking
Technology	Delphi, Quantum Grid, Rich Internet Application, OLAP, Data Mining, Database Replication

Messaging service

Mobile coupon and messaging services

We provide marketing tools for the effective customer management such as the integrated mobile messaging service including short message, long message, multimedia message, internet connection message, mobile coupon and bidirectional message.

Business-type SMS service	Mass text messaging service
Business-type MMS service	1,000-letter text, image, video, music sending service
Notification Talk Service	Service for sending an alarm talk of delivery information
Mobile coupon service	Barcode-type online gift coupon sent with mobile phone text message

Equipment and patents

Distribution of fashion equipment & system

Doosoun CNI is supplying products at the competent price under the cooperation with Korean and foreign fashion equipment system company to respond more requirement of customers.

RFID, 4GLTE, 1D BARCODE



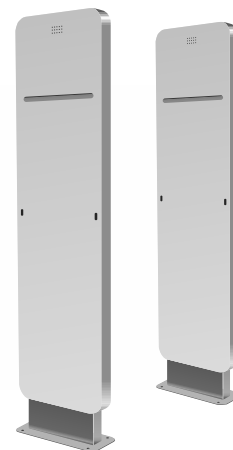
BarCode Reader



RFID Printer



Security Gate



Server



Network



Bluetooth Scanner



Mobile Printer



RFID



Patent

We believe that the main driving force of Doosoun CNI is creative and industry leading technology development and actively develop the new product through the investment of R&D sector.



Product name	Applied industries	Registration number
Doosoun direct and agency management	Fashion clothing company	2001-01-11-3685
Doosoun Sales, inventory control	Fashion clothing company	2001-01-11-5342
Multi-functional ERP 2.0	Fashion clothing company	2001-01-11-8287
Market sales management 3.5	Fashion clothing company	2002-01-11-5322
Sales distribution management 3.5	Fashion clothing company	2002-01-11-5323
Easy Label 2.0	Fashion clothing company	2004-01-11-202
Doosoun ERP 5.0	Fashion clothing company	2004-01-151-006628
Doosoun SCM	Fashion material manufacturer	2005-01-154-000357
Hospital MRO SYSTEM	Small & mid hospital material management	
DOOSOUN ERP 6.0 for Web (Multi Lingual)	Fashion distributor	2010-01-151-004462
Production management (PRS system)	fashion production and promotion company	2010-01-151-004463
Middleware for PDA & TCP/IP	Solution possessed by Doosoun CNI	
Possess BARCODE PRINTER(H/W) development-based technology	All industries	Ver 2 (ready for commercialization)
EV battery factory automating MES	EV battery industries	
Doosoun ERP 7.0	Fashion distributor	2010-01-151-004464
Doosoun ERP 8.0	Fashion distributor	C-2012-021904
Doosoun Laundry	Fashion distributor	10-2201382

Partner

...and is allied to major international partners



Customer

...and is allied to major international partners



BEEN
NATURE & COMFORT

La Perla



NAIN



DONGWOO



Woodan

MUTNAM

LOTTE



adabat



GERARD DAREL

GIORDANO

ROUNZ

DEEPEYE

ESTsoft

LAYER.

LMC.

YUDO GROUP



fuzz

SEKANSKEEN

Kanco®



TED BAKER
LONDON

Thursday Island
URBAN VINTAGE LIFE

POLLARI

OZOC

ACC:SCENT



Customer

...and is allied to major international partners

LOW CLASSIC



WONDERPLACE



CALMA

LEATHER NORI

SHE'S MISS

TBJ

PING®

Fine Fur Selected
KUKJE FUR

SOFAA

MaxMara

WORKSOUT.



Fair Liar
GOLFWEAR

TIFFANY B.Q.
BABY QUITZ



IAMYURI

ELOQ



FREITAG®



MIIG ON

renoma

33360 KITTY

ELLE

AM
ANTONY MORATO



UN UNITED NUDE™



ALL:AND

LIST

TMISOPÉ

TED BAKER
LONDON

BUCKAROO JEANS



MORADO



The amy
all new change

TIFFANY B.Q.
BABY QUITZ

More expended internal System

Solution specified at MULTI MARKET (on/off/SNS/overseas/virtual market)

POS

- Credit/Check card reader
- Varied promotion including set, bundle and 1+1 sales
- Link to sales stand-by and customer management
- Delivery tracking for group order and payed order products
- Accumulation/deposit/coupon management
- Link to Alipay
- Request personal delivery for payed order
- Deliver online order to store
- Link to KICC, NICE, SPC VAN company
- Link to tax refund(GTF)

Widoo

- Link to shopping mall/order collection /delivery information
- Link to open market/partner mall through Sabangnet
- Link to customer, inventory, accumulation and deposit

Mobile

- Real time sales trend analysis
- Market/date/product unit analysis
- Warehouse/market inventory
- Warehouse location management
- Product trend analysis/MD curation
- Door-to-door sales M-POS



ETS 9

- application link by order number
- consolidation of acceptance by order product
- transferring an AS representative in charge of AS
- acceptance of replacement, generation
- Return Receipt, Return Order Creation
- Request for return / Acceptance of return / Return Refund Completed / Logistics Linkage
- Delivery History / Collection History
- AS history/temporary storage
- Consolidated Order Search /Inventory Confirmation
- Priority Allocation / Forwarding Hold

Marketing

- Use mobile based-marketing tool
- Sales efficiency analysis
- Use on/offline voucher and coupon simultaneously, save simultaneously
- Send SMS/LMS/MMS coupon

SCM

- Distribution/release optimized to purchased/outsourced product
- Factory POP management
- Overseas product shipment management
- Domestic product unloading management
- Outsourcing margin management constant rate-price available

WMS

- DAS /DPS/ SORTER
- Link to delivery service
- On/offline product delivery-release by scanning
- Print contents list per box
- Confirmation by store return scanning
- Inventory for location

ETS 9

Definition of ETS 9

- E-commerce Telephony integration System
- Call center system linked to Doosoun-ERP8/10

Expectation effectiveness

- Only ETS can do overall AS work.
- You can communicate with logistics instructions at the call center without instructions from the middle manager.
- Customer's AS operations will be improved 2.5 times.
- With a small number of people, all orders and consultations are carried out.

Overview of the entire process

ETS 9

- application link by order number
- consolidation of acceptance by order product
- transferring an AS representative in charge of AS
- acceptance of replacement, generation
- Return Receipt, Return Order Creation
- Request for return / Request for Return / Return Refund Completed / Logistics Linkage
- Delivery History / Collection History
- AS history/temporary storage
- Consolidated Order Search/Inventory Confirmation
- Priority Allocation / Forwarding Hold

CTI

IP-PBX

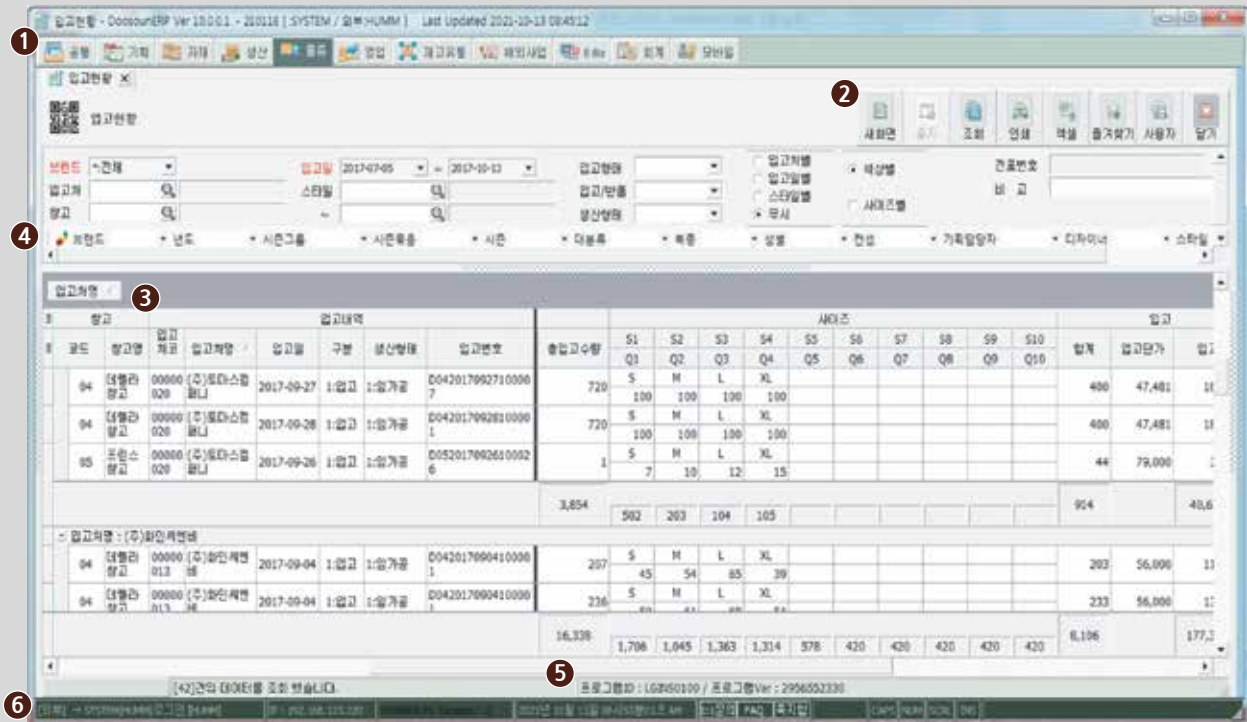


- Internet telephone interworking
- confirmation of incoming customer history
- Making/Receiving/Returning a Phone
- automatic recording/recording
- call history inquiry

Enhanced user Interface

Through the interface with enhanced user convenience, the user can differentiate the unit program to fit the characteristics of individual's duty.

It is easy to manage the user by managing the user group and program authority management.



- 1 Display upper major category Menu for work flow.



- 2 Each screen allows bookmark, Excel Up/Download, current screen saving, etc.

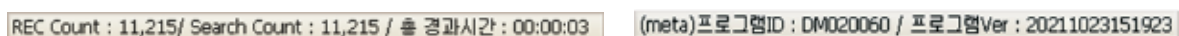


- 3 Grouping like Excel pivot.

- 4 Search with common search condition without selecting the separate search condition.



- 5 Grouping like Excel pivot.



- 6 User information and frequent work using ERP System can be found by click on the bottom button.



Mobile Solution

Create the menu for simple and clear sales trend analysis and user's authority.

Function: warehouse/store inventory examination, inventory location, company return, inventory search by product, etc.



Provide sales trend information as graph for each style.



Examine warehouse & store inventory with smart phone

If you have a smart phone and a Bluetooth scanner, you can examine the warehouse and store anytime. Both mobile app-based/hybrid-type mobile web-based version are available.

- * Applying to DB real time when scanning barcode.
(minimize data loss)

Support both iOS & Android (Pure App.)

Warehouse examination (location-based examination),
store examination (sector-based examination)

→ Available to search ERP/ POS real time.

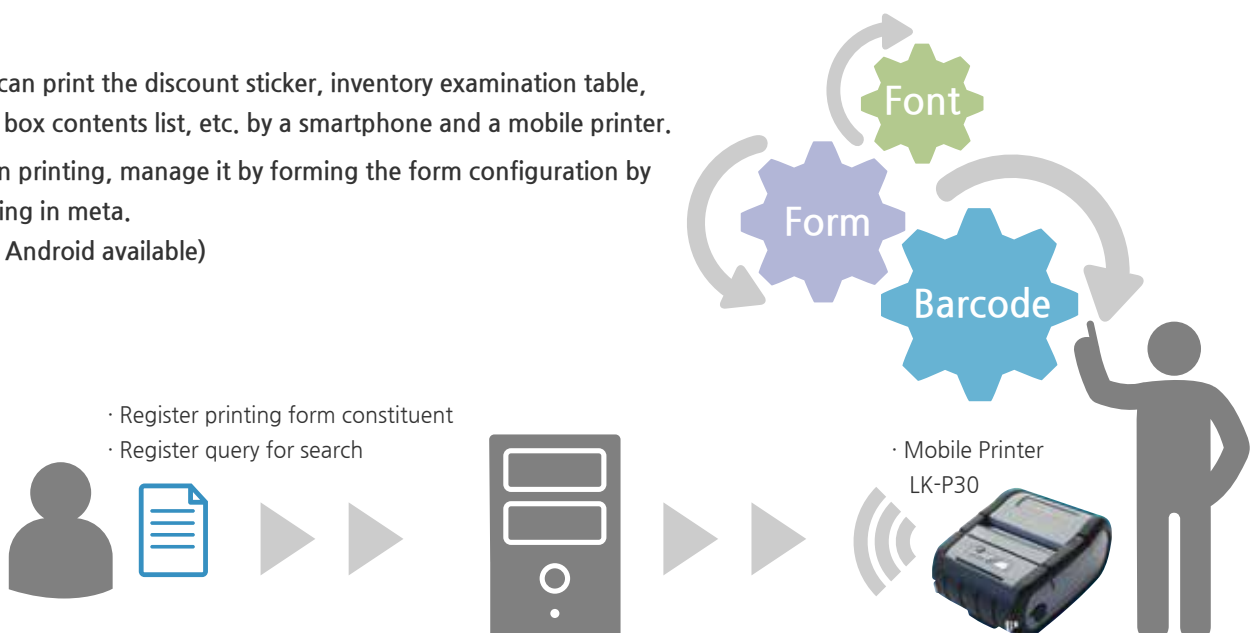


Bluetooth



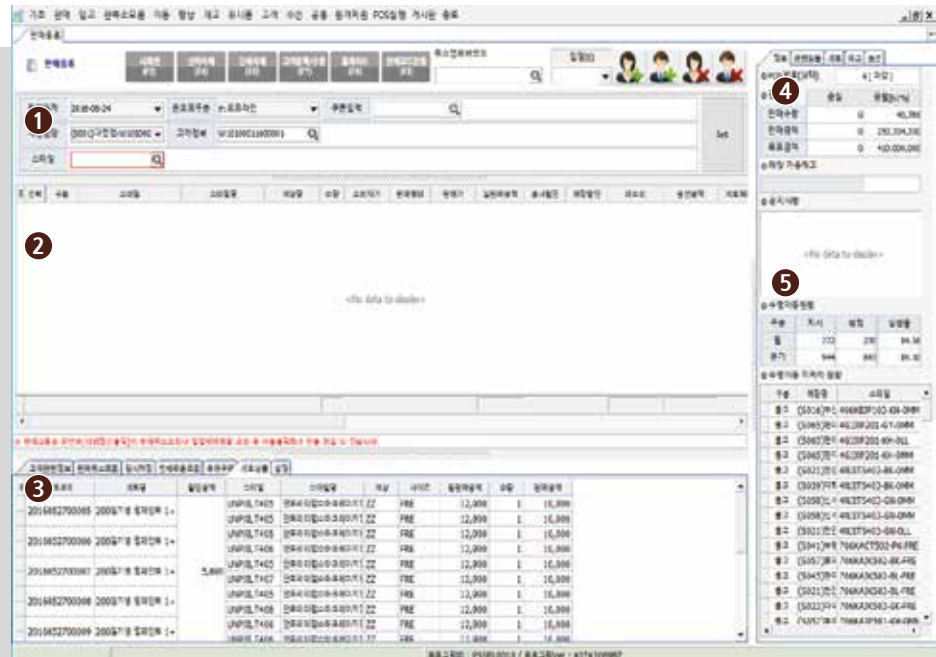
Smartphones & Mobile Printers

You can print the discount sticker, inventory examination table, SCM box contents list, etc. by a smartphone and a mobile printer. When printing, manage it by forming the form configuration by forming in meta.
(iOS, Android available)



POS

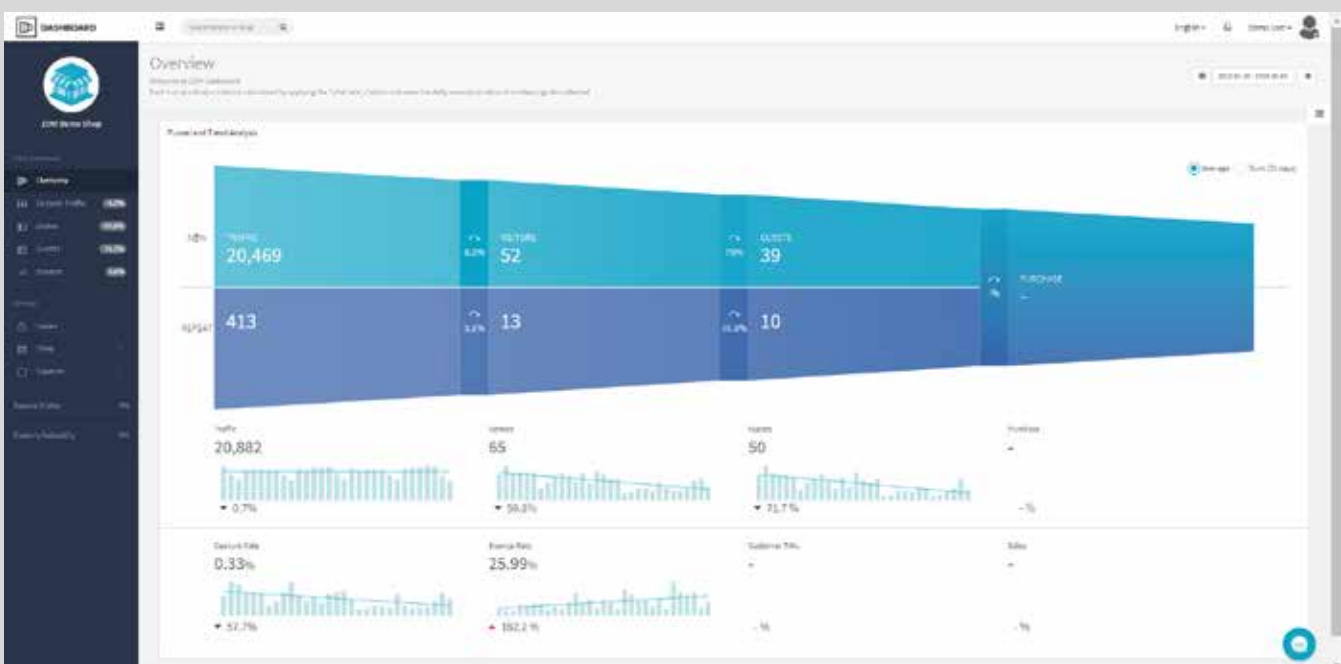
The product information and work contact with other companies are summarized briefly on one screen to allow the information check and actions without additional work.



- 1 The sales-related information of sales or return customer is displayed-registering incoming customer
- 2 The sales or return target product information is displayed.
- 3 The purchase history information like purchase history, mileage accumulation, voucher issuance/use history related to the customer is displayed. (including the issuance of automatic discount coupon for new registration)-including delivery request function for the customer who completely paid
- 4 Registration of inventory information and customized product by product in the store is available-hand-made shoes, etc.
- 5 The relevant history and plan information like notification and transfer direction from the company and process are displayed.

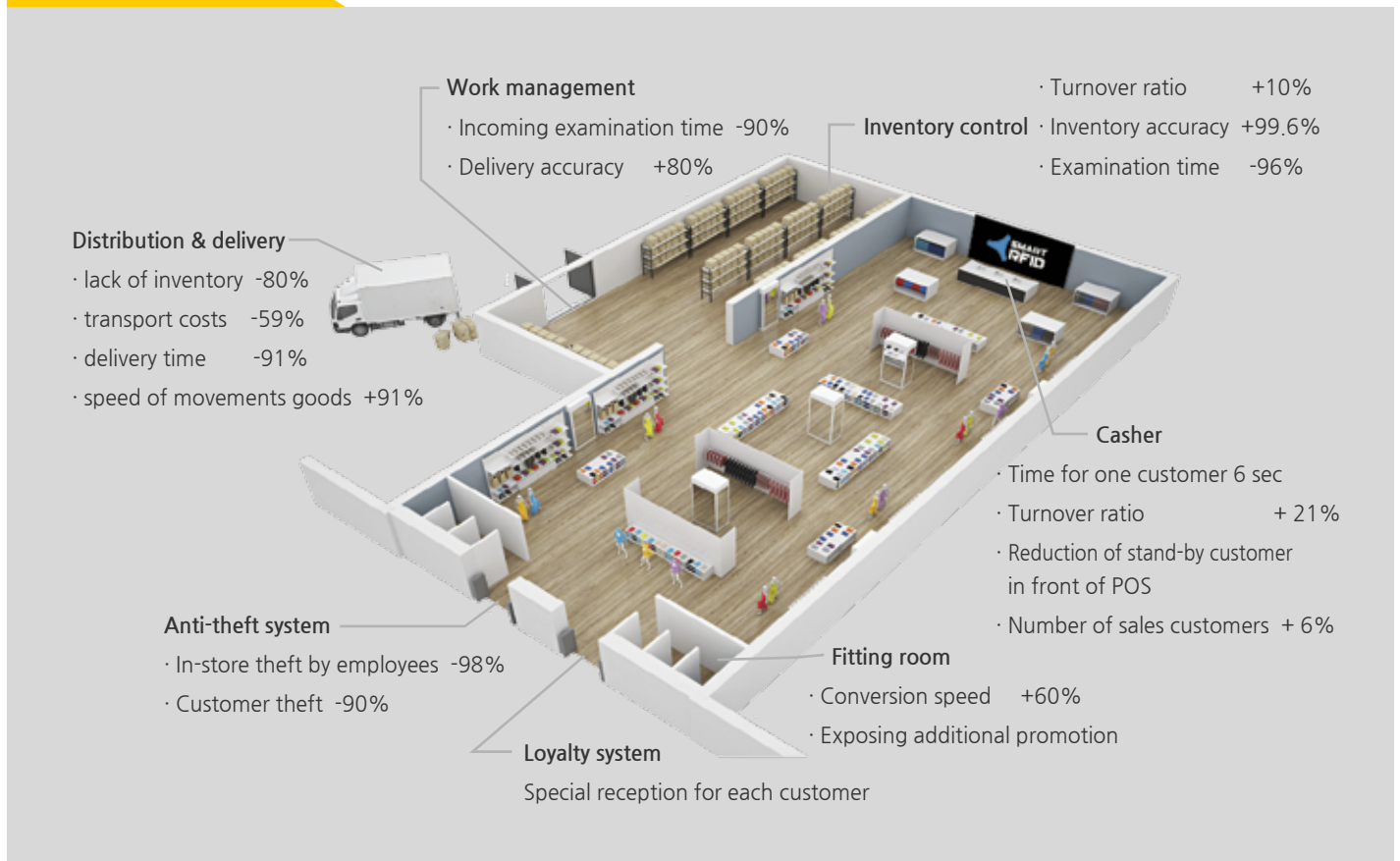
Customer Dashboard - Currently developing

- Link the customer traffic in front of the store, visitor information and POS purchase information under cooperation with Walk Insights which is the smart phone wifi signal -based customer analysis tool company.
- Check whether the visitor is the new visitor or re-visitor through dashboard.



about RFID

RFID Map



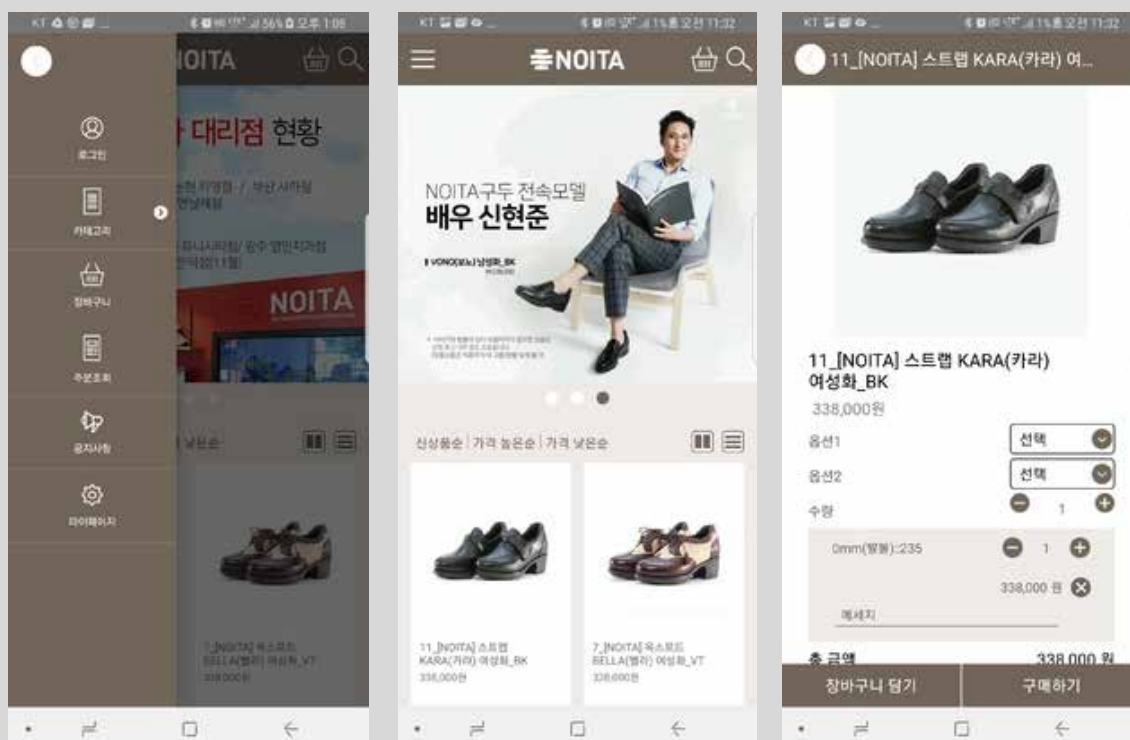
RFID Competitiveness

Item	Other application company	Doosoun CNI
Channel Frequency	UHF 920Mhz ~ 940Mhz	UHF 920Mhz ~ 940Mhz
EPC to GS1 DATABAR introduction	Not introducing. (Must read through RFID reader when selling) Do not implement in actual store RFID-based sales data is not accumulated	EPC to GS1 Databar (SGTIN - 96) Introduction (Processing by scanning databar attached to tag in sales) Not necessary to separately train store employees RFID-based sales data is accumulated
EPC Data Formats	Formed in simple serial	Save information generated by binary conversion and hexadecimal conversion of GS1 data consisting of Korean distribution standard code -based SKU information and serial in RFID chip
Other brand information filtering when RFID scanning	RFID of other brands can be scanned by overlapped serial (cannot filtered in scanner)	Use the only key in the world, RFID filters the external garbage value from scanning and only sends the actual operation data to server
Implementation of RFID individual notification RFID	No notice on RFID Tag and label	Expose that RFID is attached to the RFID tag and label as an image
Accuracy of RFID Reading	Despite difference depending on RFID tag size and design, it shows accuracy of 97%	Nearly 100% in case of European and Chinese operation currently
Sales analysis of incoming order	Not available for all brands currently operated	Available
Usage of No. of RFID introduced	Incoming, outgoing, return, store examination, inventory control	Incoming, outgoing, return, store examination, inventory control, sales process, return process, transfer between stores, sales analysis
Budget	\$ 2,800,000 ~ 4,700,000	\$ 93,000 ~ 470,000

mPOS, Company location

about mPOS

- Mobile based e-Commerce solution
- Mobile commerce solution equipped with offline-based payment solution.
- Mobile order ▷ LGU+ BIZPAYNOW-linked card payment ▷ Inventory allocation to warehouse ▷ Invoice printing ▷ Delivery process
- Cancellation order ▷ Cancellation of card payment ▷ Return request to CJ Logistics Corp. ▷ Return confirmation ▷ Return completion
- Settlement of manager fee (providing benefit from delivery)



Company location

ILSIM building
61, Seongsui-ro 22-gil,
Seongdong-gu, Seoul,
Republic of Korea

Tel: 2-460-9800
Fax: 2-460-9899
www.doosoun-cni.com



ERP Package inquiry
Director. Wangjin, lee
dssales@doosoun-cni.com

Mobile, Messaging service,
RFID inquiry
President. Hyengmo, kwon
dssales@doosoun-cni.com

Server, Network, Barcode reader,
Printer, Scanner inquiry
General Manager. Yongwook, jin
dsinfo@doosoun-cni.com

Advertisement & Partnerships
inquiry
Director. Wangjin, lee
dsinfo@doosoun-cni.com